

# SHOPFLOOR MANAGEMENT

# CASEmes



**DO YOU WANT TO ACHIEVE THE HIGHEST LEVELS OF PRODUCTION EFFICIENCY WHILE INCREASING THE QUALITY OF YOUR PRODUCTS?**

## THE APPROPRIATE MES TOOL:

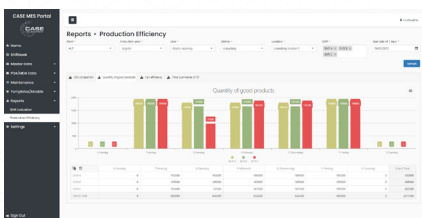
CASEmes is a manufacturing execution system that allows you to control, document, and evaluate your production processes. The quality of processes and products is made measurable through key performance indicators (KPIs). This can uncover optimization potentials in your manufacturing processes. The basis for this is the connection of machines to CASEmes to collect and analyze data.

**“CASE software and smart solutions enable companies to embark on the path of Industry 4.0 and digital transformation.”**

## YOUR BENEFITS:

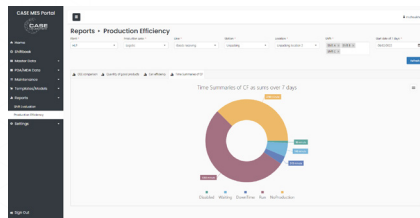
- High scalability of CASEmes.
- Easy implementation.
- Additional functions can be added quickly.
- Manageable system with intuitive handling.
- Active management of production.
- Integration of production and ERP systems.
- Managed services for machines/production equipment.
- Industry 4.0 according to requirements.
- Modularly configurable and scalable.
- Available in four languages: German, English, French, Arabic.

## EXAMPLE FEATURES:



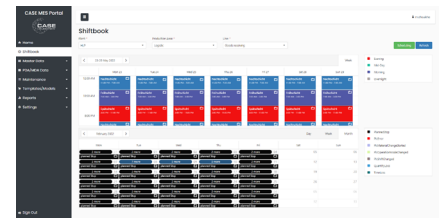
### **BENCHMARKING**

CASEmes can provide a range of tools for performance comparison, including real-time dashboards, reports, and alerts that highlight areas where performance is below target or benchmark values.



### **MANUFACTURING (KPI'S)**

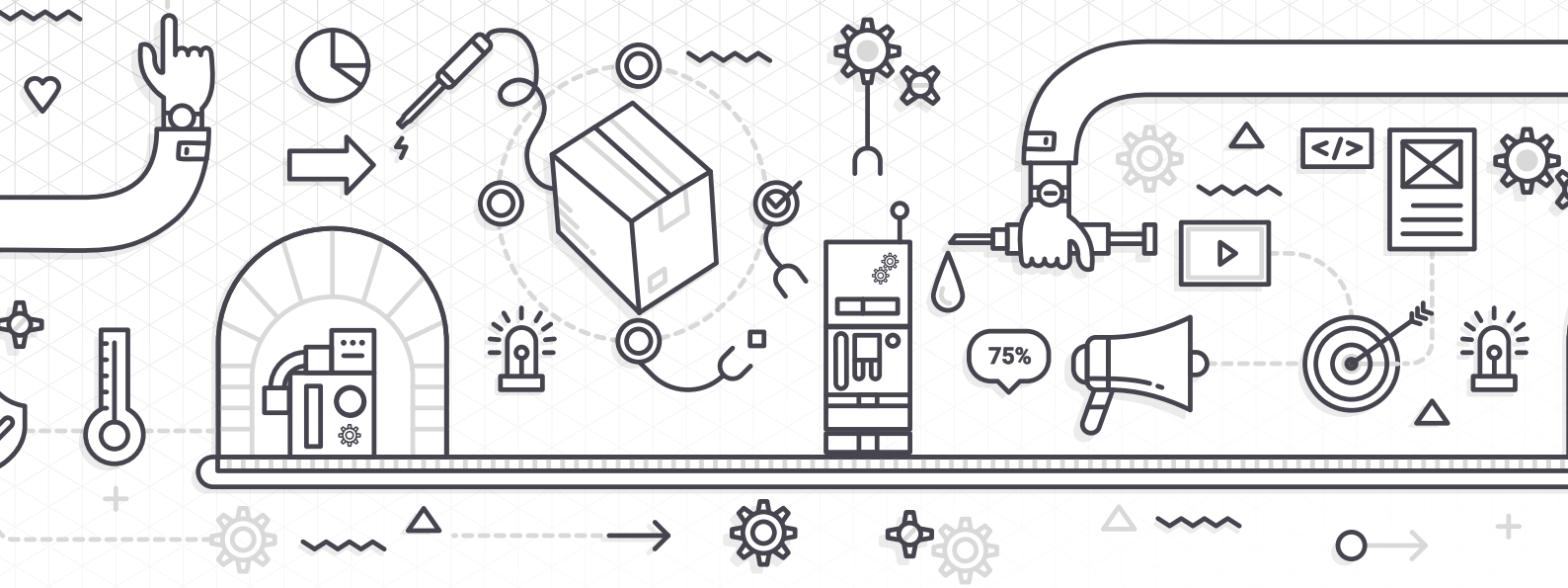
The weekly overview provided by CASEmes is a summary of the most important key performance indicators (KPIs) that help managers and executives evaluate production performance and identify trends.



### **SHIFT BOOK**

CASEmes offers an efficient and effective way to track production activities and events, allowing manufacturers to optimize production processes, reduce waste, and increase overall efficiency.

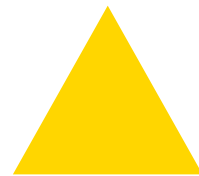




## FUNCTIONALITY AND TECHNOLOGY:

CASEmes consists of several services that are responsible for data acquisition and processing. The GUI, implemented as a Web application, is used to configure the production processes and visualize the data. Users can get a quick overview of the most important production parameters, such as production quantities, OEE, etc., through various dashboards. CASEmes is modularly structured and can be customized to meet specific needs.

**Process**



**Machines**

**Product**

Overview of application areas: process, machines & equipment, and product.

### Functionalities:

- Material flow control.
- Material management, batch tracking.
- Tool management.
- Traceability of products.
- Management board.
- calculation of key performance indicators (KPIs) such as OEE (Overall Equipment Effectiveness).
- Shift book.
- Process and machine data.
- Error analysis and setup time control.
- Master data management.
- User and rights management.

## YOUR CONTACT PERSONS:



**Sabine Stelter**  
Office Management

Mobil: +49 157 714 441 65  
Email: s.stelter@case-deutschland.de



**Dr. Mourad Chouikha**  
Managing Director

Mobil: +49 176 32934354  
Email: m.chouikha@case-deutschland.de